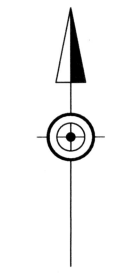


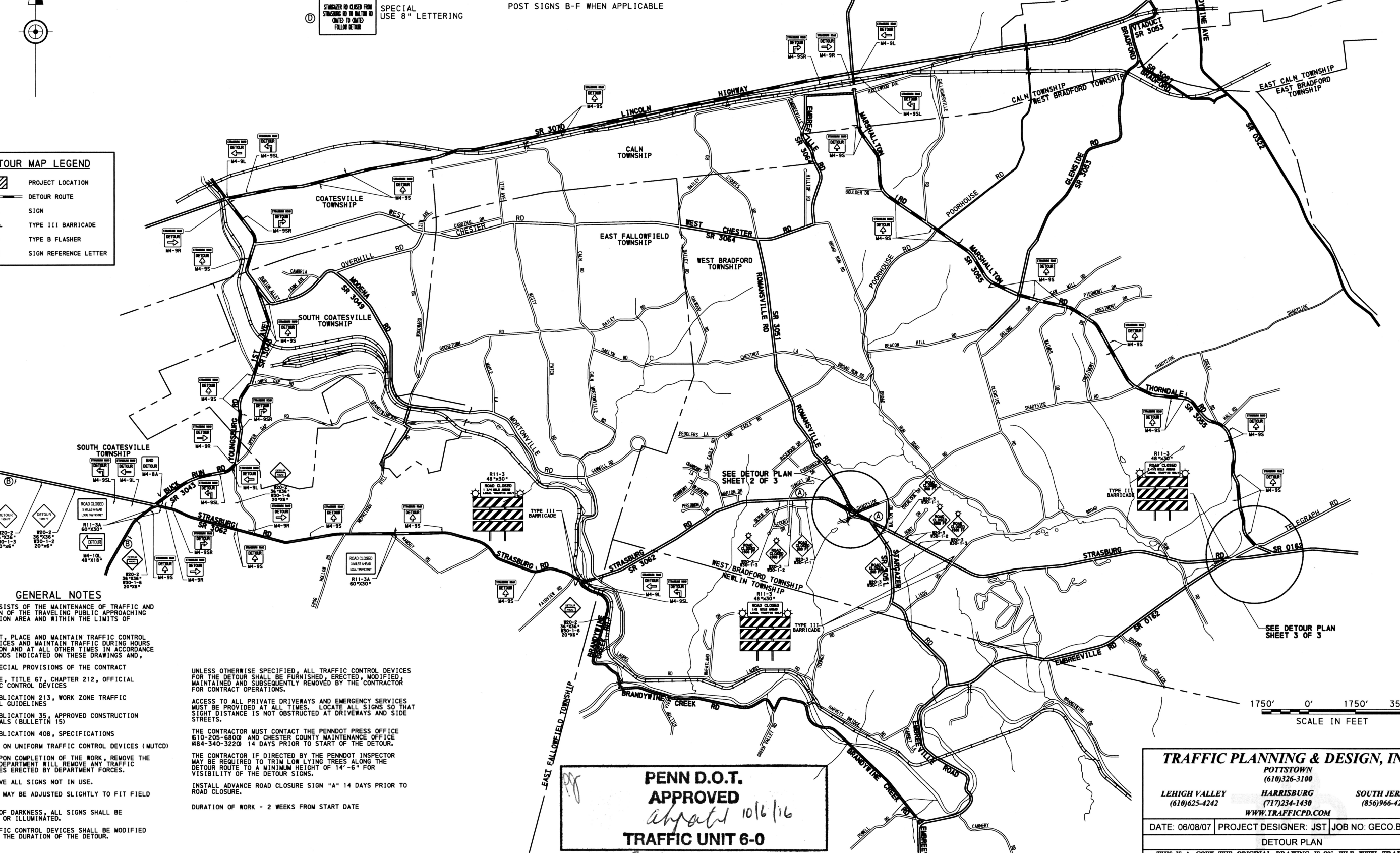
DISTRICT	COUNTY	ROUTE	SECTION	SHEET
6-0	CHESTER	3062/3051		1 OF 3
WEST BRADFORD TOWNSHIP				
REVISION NUMBER	REVISIONS	DATE	BY	
1	REVISIONS PER PENNDOT COMMENT LTR DATED 2/5/07	5/25/07	FF	
2	REVISIONS PER PENNDOT COMMENT LTR DATED 8/17/07	01/18/08	FF	
3	REVISIONS PER PENNDOT COMMENT LTR DATED 3/19/08	03/23/10	FF	
4	REVISIONS PER PENNDOT INTERIM COMMENTS	08/12/10	FF	
5	REV. PER PENNDOT COMMENT LTR DATED 12/27/10	07/14/14	FF	

- (A) THIS ROAD TO BE CLOSED DUE TO COATED SPECIAL 60"x30"
 - (B) STAKEOUT NO CLOSED FROM STREET TO TO WALKER NO COATED TO COATED FOLLOW RETURN SPECIAL USE 8" LETTERING
 - (C) STAKEOUT NO CLOSED FROM WALKER NO TO STREET NO COATED TO COATED FOLLOW RETURN SPECIAL USE 8" LETTERING
 - (D) STAKEOUT NO CLOSED FROM STRASBURG NO TO WALKER NO COATED TO COATED FOLLOW RETURN SPECIAL USE 8" LETTERING
 - (E) ROMANVILLE NO CLOSED FROM PEACHER NO TO STRASBURG NO COATED TO COATED FOLLOW RETURN SPECIAL USE 8" LETTERING
 - (F) SHADYSIDE NO CLOSED FROM WALKER NO TO STRASBURG NO COATED TO COATED FOLLOW RETURN SPECIAL USE 8" LETTERING
- POST SIGNS B-F WHEN APPLICABLE

	PROJECT LOCATION
	DETOUR ROUTE
	SIGN
	TYPE III BARRICADE
	TYPE B FLASHER
	SIGN REFERENCE LETTER



POST "SIGN A" A MINIMUM OF 14 DAYS PRIOR TO THE BEGINNING OF THE DETOUR. USE THE PROPER DATE.



GENERAL NOTES

THIS WORK CONSISTS OF THE MAINTENANCE OF TRAFFIC AND THE PROTECTION OF THE TRAVELING PUBLIC APPROACHING THE CONSTRUCTION AREA AND WITHIN THE LIMITS OF CONSTRUCTION.

FURNISH, ERECT, PLACE AND MAINTAIN TRAFFIC CONTROL SIGNS AND DEVICES AND MAINTAIN TRAFFIC DURING HOURS OF CONSTRUCTION AND AT ALL OTHER TIMES IN ACCORDANCE WITH THE METHODS INDICATED ON THESE DRAWINGS AND,

1. THE SPECIAL PROVISIONS OF THE CONTRACT
2. PA CODE, TITLE 67, CHAPTER 212, OFFICIAL TRAFFIC CONTROL DEVICES
3. PDT PUBLICATION 213, WORK ZONE TRAFFIC CONTROL GUIDELINES
4. PDT PUBLICATION 35, APPROVED CONSTRUCTION MATERIALS (BULLETIN 15)
5. PDT PUBLICATION 408, SPECIFICATIONS
6. MANUAL ON UNIFORM TRAFFIC CONTROL DEVICES (MUTCD)

IMMEDIATELY UPON COMPLETION OF THE WORK, REMOVE THE DEVICES. THE DEPARTMENT WILL REMOVE ANY TRAFFIC CONTROL DEVICES ERECTED BY DEPARTMENT FORCES.

COVER OR REMOVE ALL SIGNS NOT IN USE.

ALL DISTANCES MAY BE ADJUSTED SLIGHTLY TO FIT FIELD CONDITIONS.

DURING HOURS OF DARKNESS, ALL SIGNS SHALL BE REFLECTORIZED OR ILLUMINATED.

EXISTING TRAFFIC CONTROL DEVICES SHALL BE MODIFIED AS NEEDED FOR THE DURATION OF THE DETOUR.

UNLESS OTHERWISE SPECIFIED, ALL TRAFFIC CONTROL DEVICES FOR THE DETOUR SHALL BE FURNISHED, ERECTED, MODIFIED, MAINTAINED AND SUBSEQUENTLY REMOVED BY THE CONTRACTOR FOR CONTRACT OPERATIONS.

ACCESS TO ALL PRIVATE DRIVEWAYS AND EMERGENCY SERVICES MUST BE PROVIDED AT ALL TIMES. LOCATE ALL SIGNS SO THAT SIGHT DISTANCE IS NOT OBSTRUCTED AT DRIVEWAYS AND SIDE STREETS.

THE CONTRACTOR MUST CONTACT THE PENNDOT PRESS OFFICE 610-205-6800 AND CHESTER COUNTY MAINTENANCE OFFICE #84-340-3220 14 DAYS PRIOR TO START OF THE DETOUR.

THE CONTRACTOR IF DIRECTED BY THE PENNDOT INSPECTOR MAY BE REQUIRED TO TRIM LOW LYING TREES ALONG THE DETOUR ROUTE TO A MINIMUM HEIGHT OF 14'-6" FOR VISIBILITY OF THE DETOUR SIGNS.

INSTALL ADVANCE ROAD CLOSURE SIGN "A" 14 DAYS PRIOR TO ROAD CLOSURE.

DURATION OF WORK - 2 WEEKS FROM START DATE

PENN D.O.T.
APPROVED
approved 10/6/16
TRAFFIC UNIT 6-0
3 sheets



TRAFFIC PLANNING & DESIGN, INC.
 POTTSTOWN
 (610)326-3100

LEHIGH VALLEY (610)625-4242 HARRISBURG (717)234-1430 SOUTH JERSEY (856)966-4242

WWW.TRAFFICPD.COM

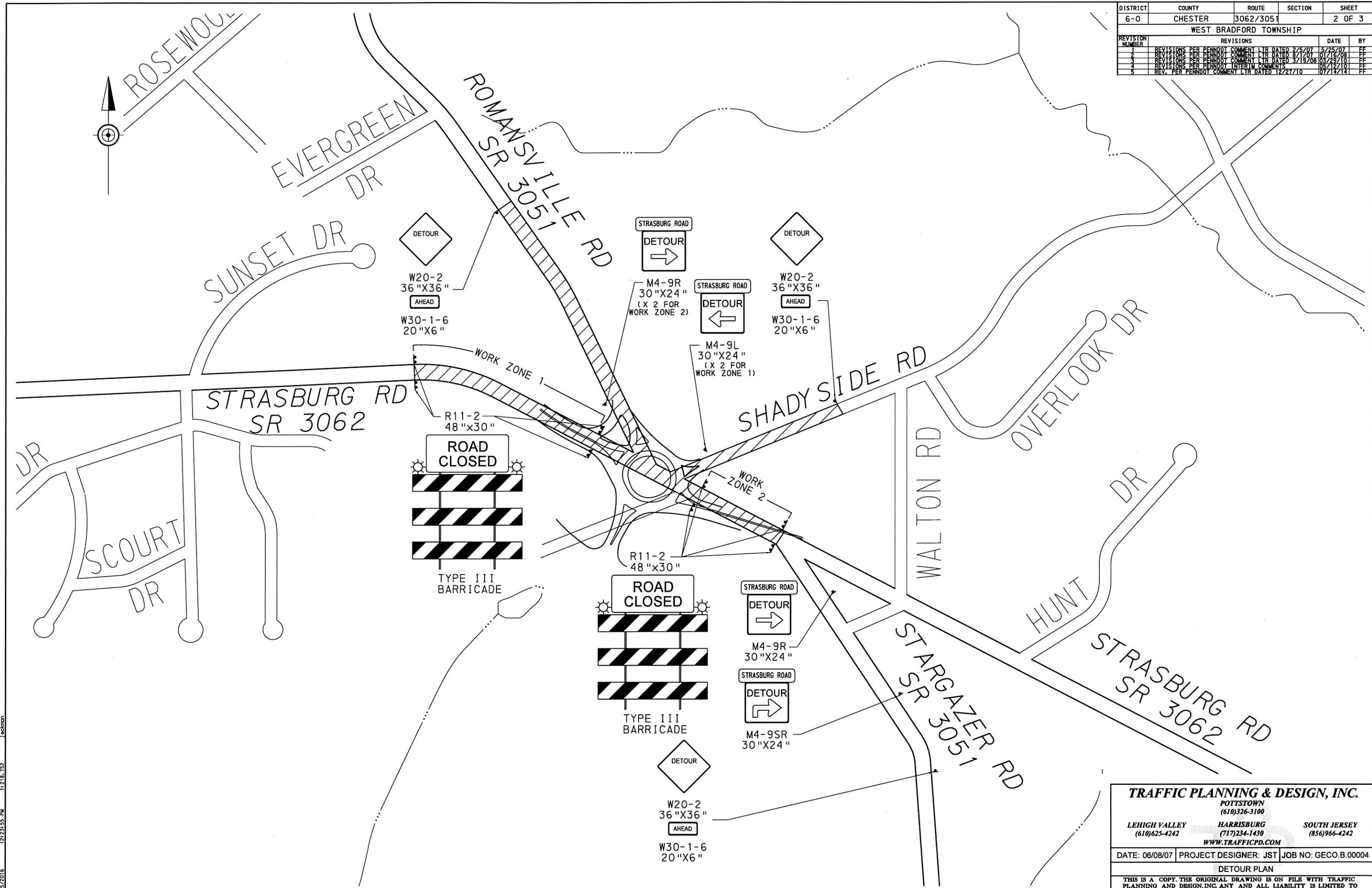
DATE: 06/08/07 PROJECT DESIGNER: JST JOB NO: GE00.B.00004

DETOUR PLAN

THIS IS A COPY. THE ORIGINAL DRAWING IS ON FILE WITH TRAFFIC PLANNING AND DESIGN, INC. ANY AND ALL LIABILITY IS LIMITED TO THE ORIGINAL, UP TO AND INCLUDING THE LAST REVISIONS. (DRN BY JLE)

H:\GEO\000004\CADD\PI\01\detour - 2016.01.dgn
 10/05/2016 12:12:51 PM 11:15:01

DISTRICT	COUNTY	ROUTE	SECTION	SHEET	
6-0	CHESTER	3062/3051		2 OF 3	
WEST BRADFORD TOWNSHIP					
REVISION NUMBER	REVISIONS			DATE	BY
1	REVISIONS PER PENNDOT COMMENT LTR DATED 2/5/07			5/25/07	FF
2	REVISIONS PER PENNDOT COMMENT LTR DATED 8/1/07			01/16/08	FF
3	REVISIONS PER PENNDOT COMMENT LTR DATED 3/19/08			05/29/10	FF
4	REVISIONS PER PENNDOT INTERIM COMMENTS			05/12/10	FF
5	REV. PER PENNDOT COMMENT LTR DATED 12/21/10			07/14/14	FF



J:\GECOB\0000\CAD\PI\cm\detour_2016_02.dgn
 10/25/2016 12:23:55 PM 11218.752 Jackson

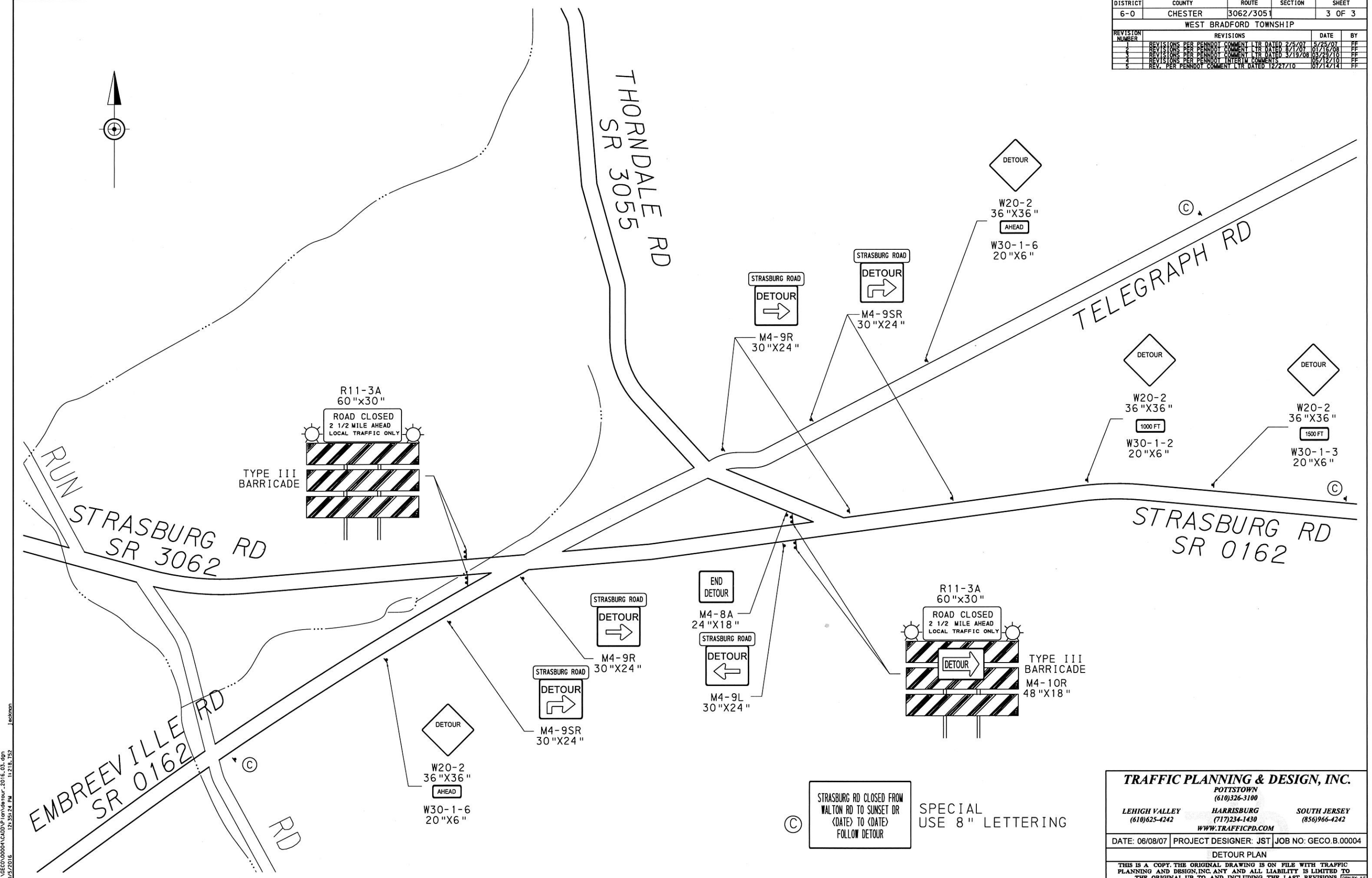
TRAFFIC PLANNING & DESIGN, INC.

POTTSTOWN
(610)326-3100

LEHIGH VALLEY (610)625-4242 HARRISBURG (717)234-1430 SOUTH JERSEY (856)966-4242
 WWW.TRAFFICPD.COM

DATE: 06/08/07	PROJECT DESIGNER: JST	JOB NO: GECO.B.00004
DETOUR PLAN		
<small>THIS IS A COPY. THE ORIGINAL DRAWING IS ON FILE WITH TRAFFIC PLANNING AND DESIGN, INC. ANY AND ALL LIABILITY IS LIMITED TO THE ORIGINAL, UP TO AND INCLUDING THE LAST REVISIONS. DRN BY: AJ</small>		

DISTRICT	COUNTY	ROUTE	SECTION	SHEET	
6-0	CHESTER	3062/3051		3 OF 3	
WEST BRADFORD TOWNSHIP					
REVISION NUMBER	REVISIONS			DATE	BY
1	REVISIONS PER PENNDOT COMMENT LTR DATED 2/5/07			5/25/07	FF
2	REVISIONS PER PENNDOT COMMENT LTR DATED 3/1/07			01/16/08	FF
3	REVISIONS PER PENNDOT COMMENT LTR DATED 3/1/07			05/23/10	FF
4	REVISIONS PER PENNDOT COMMENT LTR DATED 3/1/07			05/12/10	FF
5	REV. PER PENNDOT COMMENT LTR DATED 12/27/10			07/14/14	FF



J:\GEO\00004\CADD\PI\con\detour_2015_03.dwg
 10/25/2016 12:35:24 PM 11218.752
 Jackson

TRAFFIC PLANNING & DESIGN, INC.

POTTSTOWN
(610)326-3100

LEHIGH VALLEY (610)625-4242
 HARRISBURG (717)234-1430
 SOUTH JERSEY (856)966-4242
 WWW.TRAFFICPD.COM

DATE: 06/08/07	PROJECT DESIGNER: JST	JOB NO: GE00.B.00004
DETOUR PLAN		
<small>THIS IS A COPY. THE ORIGINAL DRAWING IS ON FILE WITH TRAFFIC PLANNING AND DESIGN, INC. ANY AND ALL LIABILITY IS LIMITED TO THE ORIGINAL, UP TO AND INCLUDING THE LAST REVISIONS. (DRN BY: JST)</small>		